

HUNTER'S WORLDWIDE

HEAVY DUTY AFFORDABLE SERIES BUCKET ELEVATOR

200 BU/HR TO 4,000 BU/HR

5.09 MT/HR TO 101.8 MT/HR

ALL CAPACITIES ARE BASED ON 75% BUCKET FILL

Hunter's Worldwide are doing things today that others will be doing tomorrow.

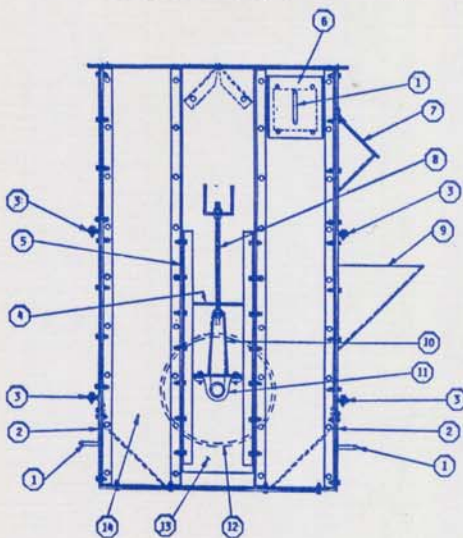


Western Elevator - Ronan, Montana

You have requested a low cost bucket elevator for today's cost conscious customers. We have met this challenge and offer it to you now in the **AFFORDABLE SERIES**.

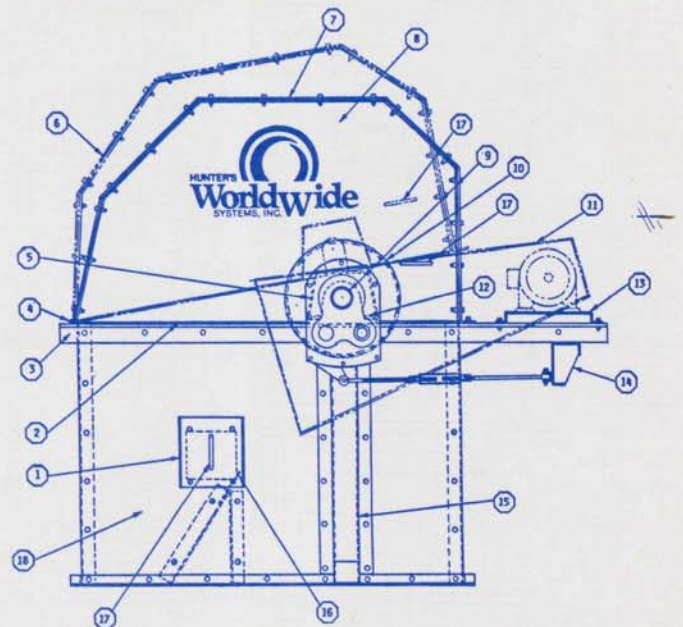
Researching the market we determined the need for a 200 BPH thru 4,000 BPH in a commercial quality low cost line. We feature single trunking, 12 GA head and boot with 14 GA trunking. The unique design and our manufacturing skills have allowed us to offer you the **AFFORDABLE SERIES**.

New technology in coating has proven the advantage of coating over galvanized for long wear. We use two coats of zinc chromenate primer and a finish coat of urethane epoxy. Our feature color is blue, but other colors are available. **(We completely coat the inside of the bucket elevator.)**



Boot Section

1. Handle
2. Reinforced slide inspection for easy removal
3. Flanged side panels, bolted for extra strength
4. UHMW liner and seal to prevent seizing of slide
5. Adjustable side rails for takeup
6. (2) Side Inspection doors
7. Hinged peak door
8. Heavy Duty Takeup rod
9. Boot Hopper - One with each boot
10. Heavy Duty "U" Assembly for takeup
11. Industrial series ball bearings (Flange type to meet OSHA requirements)
12. Boot Pulley balanced to prevent vibration
13. Heavy Duty slide plate
14. 12 GA Boot size reinforced with angle on all four corners



Head Section

- 1.(2) Side Inspection Doors
2. Water and Dust Seal
3. Heavy Duty Bearing Support Angle
4. Hinge
5. Bearing Rain Cover & Dust Seal
6. Hinged Bonnet for ease of inspection
7. Boltable Upper Cover fabricated of 12 GA Abrasion Resistant Steel
8. Side Bonnet - 12 GA
9. Factory Mounted DODGE Drive-Head Shaft stress proofed
10. Head Pulley rubber vulcanized faced, crowned and balanced to prevent vibration.
11. Drive Guard to meet OSHA requirements
12. Industrial type pillow block bearings
13. U-Shaped Heavy Duty motor mount
14. Torque Arm bracket especially designed for extra strength
15. Bearing Support column to align bearings perfectly level
16. Adjustable rubber throat plate
17. Handles
18. Lower Head Section - 12 GA steel All four corners reinforced.



HUNTER'S WORLDWIDE

HEAVY DUTY AFFORDABLE SERIES BUCKET ELEVATOR

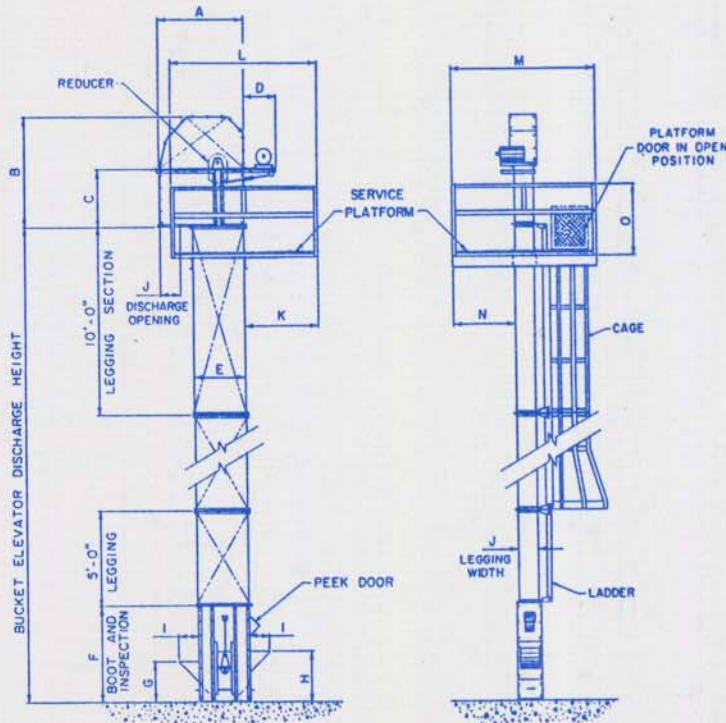
200 BU/HR TO 4,000 BU/HR
5.09 MT/HR TO 101.8 MT/HR

ALL CAPACITIES ARE BASED ON 75% BUCKET FILL

Model No.	B.P.H.	Metric Tons Per Hr.	Cu. Ft. Per Hr.	Bucket Size Plastic	Bucket Centers	Head Shaft RPM Speed	Belt Speed	Head Gage	Head & Boot Pulley Dia.	Legging Gage	Boot Gage
AFFORDABLE #2	200	5.09	250	4 x 3	9½"	135	424	12	12"	14	12
AFFORDABLE #4	400	10.18	500	5 x 4	12"	138	435	12	12"	14	12
AFFORDABLE #6	600	15.27	750	5 x 4	8"	138	435	12	12"	14	12
AFFORDABLE #10	1,000	25.4	1,250	5 x 4	4½"	126	397	12	12"	14	12
AFFORDABLE #15	1,500	38.2	1,875	8 x 5	8"	96	402	12	16"	14	12
AFFORDABLE #20	2,000	50.9	2,500	8 x 5	6"	96	402	12	16"	14	12
AFFORDABLE #30	3,000	76.3	3,750	9 x 5	6"	127	530	12	16"	14	12
AFFORDABLE #40	4,000	101.8	5,000	9 x 6	7"	119	500	12	16"	14	12

AFFORDABLE SERIES MODEL NO.	A	B	C	D	E	F	G	H	I	J	K	L	M	N	O
(No. 2), (No. 4), (No. 6), (No. 10)	40	42½	24½	27	25	60	23¼	32	9	9	39¾	85¼	89½	40¼	45
(No. 15), (No. 20), (No. 30), (No. 40)	54	68	37	23½	33	60	23¼	32	12	12	44½	93¼	92½	40¼	45

DIMENSIONS, SPECIFICATIONS & DESIGN SUBJECT TO CHANGE WITHOUT NOTICE.



I-70 Hunter Access Road • #1 Hunter Industrial Park • Fulton, MO 65251-9601
Phone - (314) 642-1800 • FAX - (314) 642-0900