

HUNTER'S WORLDWIDE

HEAVY DUTY AMERICAN SERIES BUCKET ELEVATOR

100 BU/HR to 100,000 BU/HR

2.5 MT/HR to 2,545 MT/HR

ALL CAPACITIES ARE BASED ON 75% BUCKET FILL

Hunter's Worldwide are doing things today that others will be doing tomorrow.

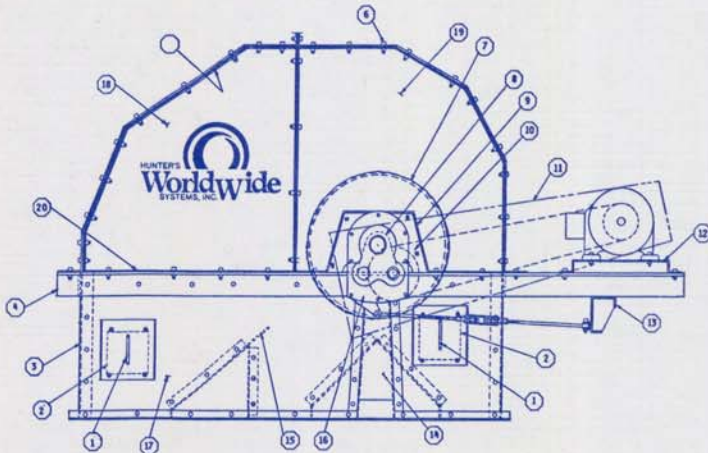


NAVAJO AGRICULTURAL PRODUCTS
FARMINGTON, NM

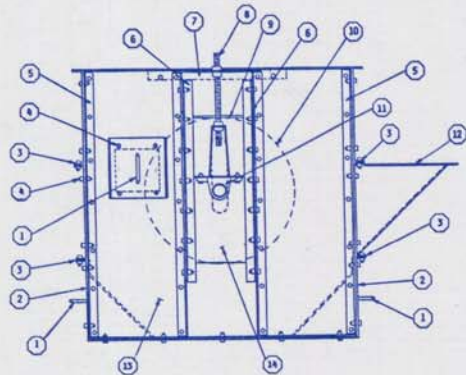
Those of you who know the **Hunter Bucket Elevators** will recognize the traditional design that we have built for many years. We have updated by featuring **18** outstanding items on the head section and **14** items on the boot section. Our inspection section has a built in lock and key that complies with OSHA regulations.

We have designed and built the **AMERICAN SERIES** proudly. You will be impressed with its performance.

We have standardized on **A New Method Of Coating**, using two coats of epoxy ester primer and a finish coat of urethane epoxy coating **inside and outside**. Our feature color is blue, other colors are available. We comply with OSHA requirements by coating the ladder, cage, and platform OSHA yellow.



1. HANDLES
2. 4 INSPECTION DOORS - 2 ON EACH SIDE
3. 10 GAGE REPLACEABLE FRONT WEAR PLATE
4. HEAVY DUTY BEARING SUPPORT ANGLE
5. 10 GAGE AR STEEL REPLACEABLE WEARLINER
6. ALL BOLTS GRADE 5
7. HEAD PULLEY VULCANIZED RUBBER LAGGING - ELECTROSTATICALLY BALANCED
8. COMMERCIAL GRADE PILLOW BLOCK BEARINGS LOCATED IN PLACE AND PINNED
9. WEATHER SHIELD AND DUST SHIELD FOR BEARING
10. RUBBER SEAL AROUND BEARING TO ELIMINATE DUST
11. OPTIONAL DRIVE GUARD
12. HEAVY DUTY MOTOR MOUNT TO ACCOMMODATE ALL SIZE MOTORS
13. TESTED HIGH STRENGTH TORQUE ARM BRACKET
14. BEARING SUPPORT COLUMN LOCATED FOR ACCURACY FOR BEARING ALIGNMENT - 3/16 STEEL
15. RUBBER ADJUSTABLE THROAT PLATE FOR ACCURATE CLEANOUT
16. DODGE REDUCER MOUNTED AND ADJUSTED AT FACTORY
17. LOWER HEAD SECTION CONSTRUCTED OF 10 GAGE STEEL
18. UPPER HEAD SECTION CONSTRUCTED OF 10 GAGE STEEL



1. HANDLES
2. UNIQUE DESIGN CLEANOUT DOOR
3. FLANGED END PLATES, BOLTED FOR ADDITIONAL STRENGTH
4. 2 INSPECTION DOORS - ONE ON EACH SIDE
5. 4 RIGID CORNER POSTS FOR ADDITIONAL STRENGTH
6. ADJUSTABLE SLIDE RAILS TO PREVENT DUST LEAKAGE
7. SUPPORT COLUMN FOR ADDITIONAL STRENGTH
8. ADJUSTABLE HEAVY DUTY TAKEUP ROD
9. U.H.M.W. DUST SEAL BEHIND SLIDE TO PREVENT SEIZING
10. BOOT PULLEY ELECTROSTATICALLY BALANCED
11. PILLOW BLOCK BEARINGS LOCATED 1 1/2" FROM SLIDE TO MEET OSHA REQUIREMENTS
12. BOOT HOPPER CONSTRUCTED OF 3/16 AR STEEL FLANGED AND DESIGNED FOR THE WIDTH OF THE BUCKET FOR ACCURATE FILLING
13. BOOT CONSTRUCTED OF 3/16" STEEL THROUGHOUT
14. COMMERCIALY DESIGNED 1/4" STEEL SLIDE TAKEUP ASSEMBLY TO ACCOMMODATE ACCURATE ADJUSTMENT

HUNTER'S
WorldwideTM
SYSTEMS, INC.

1-70 Hunter Access Road • #1 Hunter Industrial Park • Fulton, MO 65251-9601
Phone - (314) 642-1800 • FAX - (314) 642-0900



I-70 Hunter Access Road • #1 Hunter Industrial Park • Fulton, MO 65251-9601
Phone - (314) 642-1800 • FAX - (314) 642-0900

American Series Bucket Elevators

Model	BU/HR	MT/HR	Cu.ft per Hr.	Plastic Bucket Size	Bucket Center	Rows of Buckets	Head Shaft RPM	Belt Speed FPM	Head Steel	Head Liner Steel	Head Pulley DIA.	Legging Steel	Boot Steel
Washington-1	100	2.5	120	4"X3"	12.00"	1	50	314	10ga.	10ar.	24"	12ga.	3/16"
Washington-2	300	7.6	360	5"X4"	12.00"	1	52	316	10ga.	10ar.	24"	12ga.	3/16"
Washington-3	500	12.7	850	6"X5"	12.00"	1	50	314	10ga.	10ar.	24"	12ga.	3/16"
Washington-4	1,000	25.4	1,250	9"X5"	12.00"	1	56	354	10ga.	10ar.	24"	12ga.	3/16"
Washington-5	2,000	50.9	2,500	10"X6"	11.00"	1	60	373	10ga.	10ar.	24"	12ga.	3/16"
Liberty -1	2,000	50.9	2,500	12"X6"	12.00"	1	42	330	10ga.	10ar.	30"	12ga.	3/16"
Liberty -2	3,000	76.2	3,750	13"X6"	11.00"	1	50	391	10ga.	10ar.	30"	12ga.	3/16"
Liberty -3	4,000	101.8	5,000	13"X7"	10.75"	1	50	393	10ga.	10ar.	30"	12ga.	3/16"
Liberty -4	5,000	127.0	6,250	14"X7"	12.00"	1	68	533	10ga.	10ar.	30"	12ga.	3/16"
Liberty -5	6,000	152.4	7,500	14"X7"	10.00"	1	68	533	10ga.	10ar.	30"	12ga.	3/16"
Liberty -6	7,000	177.0	9,750	14"X7"	8.75"	1	68	533	10ga.	10ar.	30"	12ga.	3/16"
Lincoln -1	4,000	101.8	5,000	15"X7"	12.00"	1	42	395	10ga.	10ar.	36"	12ga.	3/16"
Lincoln -2	5,000	127.0	6,250	16"X7"	11.00"	1	45	430	10ga.	10ar.	36"	12ga.	3/16"
Lincoln -3	6,000	152.4	7,500	16"X8"	11.50"	1	44	410	10ga.	10ar.	36"	12ga.	3/16"
Lincoln -4	7,000	177.0	9,750	16"X8"	10.00"	1	46	416	10ga.	10ar.	36"	12ga.	3/16"
Lincoln -5	8,000	203.2	10,000	16"X8"	9.00"	1	46	428	10ga.	10ar.	36"	12ga.	3/16"
Franklin -1	8,000	203.2	10,000	13"X7"	12.00"	2	41	450	3/16"	3/16"ar.	42"	9/64"	1/4"
Franklin -2	9,000	228.6	11,000	15"X7"	12.00"	2	40	439	3/16"	3/16"ar.	42"	9/64"	1/4"
Franklin -3	10,000	254.1	12,500	16"X7"	12.00"	2	43	469	3/16"	3/16"ar.	42"	9/64"	1/4"
Franklin -4	11,000	280.0	13,500	14"X8"	12.00"	2	41	450	3/16"	3/16"ar.	42"	9/64"	1/4"
Franklin -5	12,000	304.9	15,000	16"X8"	12.00"	2	40	439	3/16"	3/16"ar.	42"	9/64"	1/4"
Monroe -1	10,000	254.1	12,500	16"X7"	12.00"	2	40	503	3/16"	3/16"ar.	48"	9/64"	1/4"
Monroe -2	12,000	304.9	15,000	14"X8"	12.00"	2	40	503	3/16"	3/16"ar.	48"	9/64"	1/4"
Monroe -3	14,000	356.3	17,500	16"X8"	12.00"	2	40	503	3/16"	3/16"ar.	48"	9/64"	1/4"
Monroe -4	15,000	381.8	18,500	18"X8"	12.00"	2	40	503	3/16"	3/16"ar.	48"	9/64"	1/4"
Monroe -5	16,000	407.2	19,900	18"X8"	11.00"	2	40	503	3/16"	3/16"ar.	48"	9/64"	1/4"
Monroe -6	17,000	432.7	21,000	18"X8"	10.50"	2	40	503	3/16"	3/16"ar.	48"	9/64"	1/4"
Monroe -7	18,000	458.1	22,500	18"X8"	10.00"	2	40	503	3/16"	3/16"ar.	48"	9/64"	1/4"
Jefferson -1	18,000	458.1	22,500	14"X7"	12.00"	3	40	628	1/4"	1/4"ar.	60"	9/64"	1/4"
Jefferson -2	19,000	483.6	23,600	15"X7"	12.00"	3	40	628	1/4"	1/4"ar.	60"	9/64"	1/4"
Jefferson -3	20,000	509.0	25,000	16"X7"	12.00"	3	40	628	1/4"	1/4"ar.	60"	9/64"	1/4"
Jefferson -4	21,000	534.5	26,000	16"X7"	11.50"	3	40	628	1/4"	1/4"ar.	60"	9/64"	1/4"
Jefferson -5	22,000	560.0	27,300	16"X7"	10.75"	3	40	628	1/4"	1/4"ar.	60"	9/64"	1/4"
Jefferson -6	23,000	585.4	28,600	14"X8"	12.00"	3	40	628	1/4"	1/4"ar.	60"	9/64"	1/4"
Jefferson -7	24,000	610.5	30,500	14"X8"	11.50"	3	40	628	1/4"	1/4"ar.	60"	9/64"	1/4"
Jefferson -8	25,000	636.3	31,250	14"X8"	11.00"	3	40	628	1/4"	1/4"ar.	60"	9/64"	1/4"
Jefferson -9	26,000	661.8	32,500	16"X8"	12.00"	3	40	628	1/4"	1/4"ar.	60"	9/64"	1/4"
Jefferson -10	27,000	687.2	33,600	16"X8"	11.50"	3	40	628	1/4"	1/4"ar.	60"	9/64"	1/4"
Jefferson -11	28,000	712.7	34,800	18"X8"	12.00"	3	40	628	1/4"	1/4"ar.	60"	9/64"	1/4"
Jefferson -12	29,000	738.1	36,000	18"X8"	11.50"	3	40	628	1/4"	1/4"ar.	60"	9/64"	1/4"
Jefferson -13	30,000	763.6	37,300	18"X8"	11.00"	3	40	628	1/4"	1/4"ar.	60"	9/64"	1/4"
Jefferson -14	32,000	814.5	40,000	18"X8"	10.50"	3	40	628	1/4"	1/4"ar.	60"	9/64"	1/4"
Revere -1	30,000	763.6	37,300	15"X7"	12.00"	4	40	754	1/4"	1/4"ar.	72"	3/16"	3/8"
Revere -2	32,000	814.5	40,000	16"X7"	12.00"	4	40	754	1/4"	1/4"ar.	72"	3/16"	3/8"
Revere -3	35,000	890.9	43,750	16"X7"	11.00"	4	40	754	1/4"	1/4"ar.	72"	3/16"	3/8"
Revere -4	36,000	916.3	44,800	14"X8"	12.00"	4	40	754	1/4"	1/4"ar.	72"	3/16"	3/8"
Revere -5	40,000	1,018.1	49,700	14"X8"	11.00"	4	40	754	1/4"	1/4"ar.	72"	3/16"	3/8"
Revere -6	42,000	1,069.0	52,200	16"X8"	12.00"	4	40	754	1/4"	1/4"ar.	72"	3/16"	3/8"
Revere -7	45,000	1,145.4	56,000	18"X8"	12.00"	4	40	754	1/4"	1/4"ar.	72"	3/16"	3/8"
Revere -8	50,000	1,272.5	62,200	18"X8"	10.75"	4	40	754	1/4"	1/4"ar.	72"	3/16"	3/8"
Edison -1	45,000	1,145.4	56,000	14"X8"	12.00"	5	40	754	1/4"	1/4"ar.	72"	3/16"	3/8"
Edison -2	50,000	1,272.5	62,200	14"X8"	11.00"	5	40	754	1/4"	1/4"ar.	72"	3/16"	3/8"
Edison -3	55,000	1,400.0	68,400	18"X8"	12.00"	5	40	754	1/4"	1/4"ar.	72"	3/16"	3/8"
Edison -4	60,000	1,527.2	74,600	18"X8"	11.25"	5	40	754	1/4"	1/4"ar.	72"	3/16"	3/8"
Adams -1	55,000	1,400.0	68,400	14"X8"	12.00"	6	30	754	3/8"	3/8"	96"	3/16"	1/2"
Adams -2	60,000	1,527.2	74,600	14"X8"	11.00"	6	30	754	3/8"	3/8"	96"	3/16"	1/2"
Adams -3	70,000	1,718.8	87,100	16"X8"	11.00"	6	31	763	3/8"	3/8"	96"	3/16"	1/2"
Adams -4	80,000	2,036.5	99,500	18"X8"	11.00"	6	33	817	3/8"	3/8"	96"	3/16"	1/2"
Adams -5	90,000	2,290.9	112,000	18"X8"	10.00"	6	34	840	3/8"	3/8"	96"	3/16"	1/2"
Adams -6	100,000	2,545.4	124,000	18"X8"	9.50"	6	35	882	3/8"	3/8"	96"	3/16"	1/2"