

HUNTER'S WORLDWIDE HEAVY DUTY IGUANA SERIES EN-MASSE CHAIN CONVEYOR

Hunter's Worldwide are doing things today that others will be doing tomorrow.



AG REMP SERVICE, 1750 BROADWAY WATERLOO, IA 50703
OVER 1,500 FT OF 7,000 BU/HR IGUANA CONVEYOR

Features:

1. Heavy Duty Construction
2. Dust and Weather Tight
3. Energy Saving Low Horse Power
4. Self Cleaning Trough Design
5. Intermediate Discharge for Free Flowing Material
6. High Strength Chain for Long Life
7. Low Chain Speed for Reduced Wear
8. Automatic Chain Tension for Long Life (Patented)
9. Hip Cover for Water Shed
10. Automatic Shut Down (Patented)
11. Bottom Liner 3/16 Abrasive Resistant Steel (Optional)
12. Bottom Liner 3/8 U.H.M.W. (Optional)
13. Trough, Head, and Tail Factory Assembled and Preset
14. 25.4 MT/HR to 1,030.9 MT/HR
15. 1000 BU/HR to 40,500 BU/HR
16. Material Damage Almost Non-Existant

16 WAYS THAT HUNTER'S WORLDWIDE IS THE CHOICE OF THE MATERIAL HANDLING INDUSTRY

Material is fed past the upper return chain then falls into the trough bottom where the lower chain moves it forward to the discharge. As additional material is introduced, it lays on top of the moving material and is conveyed toward the discharge at the same rate as the chain. The return chain limits the maximum level of material in the trough to eliminate the possibility of plugging the conveyor. This feature makes it extremely valuable as a bin or pit feeder.

WE HAVE STANDARDIZED ON A NEW METHOD OF COATING, USING TWO COATS OF ZINC CHROMENATE PRIMER AND A FINISH COAT OF URETHANE EXPOXY COATING INSIDE AND OUTSIDE. OUR FEATURE COLOR IS BLUE, OTHER COLORS ARE AVAILABLE.

**THE NEWEST AND MOST
MOST EFFICIENT WAY TO
HANDLE FREE FLOW MATERIALS**

**WITH CAPACITY RANGES
25.4 MT/HR to 1,039.9 MT/HR
1,000 BU/HR to 40,500 BU/HR**



**HEAVY DUTY INDUSTRIAL
CONVEYORS
FLAT BOTTOM TYPE
For Energy Conscious Customers**

HUNTER'S  TM
Worldwide
SYSTEMS, INC.

I-70 Hunter Access Road • #1 Hunter Industrial Park • Fulton, MO 65251-9601
Phone - (314) 642-1800 • FAX - (314) 642-0900

HUNTER'S WORLDWIDE

HEAVY DUTY

IGUANA SERIES

EN-MASSE CHAIN CONVEYOR

Hunter's Worldwide are doing things today that others will be doing tomorrow.

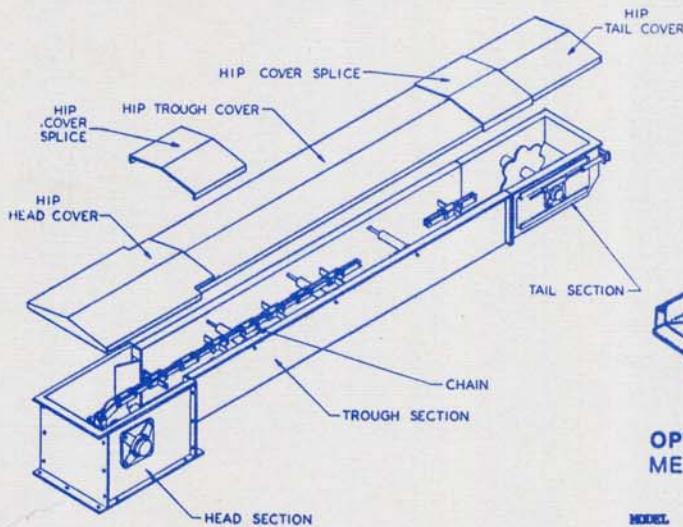


SPECIFICATIONS

IGUANA SERIES

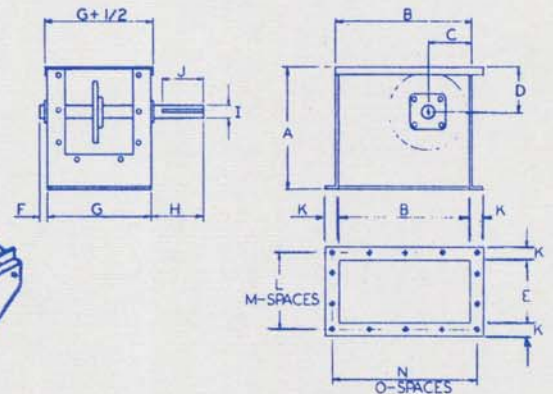
MODEL NO.	BOX SIZE W. X H.	MAX. CAPACITY BU./HR.	MAX. CAPACITY MT./HR.	MIN. CAPACITY BU./HR.	MIN. CAPACITY MT./HR.	MAX. LENGTH	HEAD LENGTH	TAIL LENGTH	HEAD GA	TAIL GA	TROUGH GA	HIP COVER GA	CHAIN PITCH	SPROCKET TEETH	WT. PER FT.
ISC-0	8" X 6.5"	2,500	63.6	200	5.09	204	20"	28"	10"	10"	12	14	2"	7	21.6
ISC-A-1	8" X 10"	4,000	101.8	500	12.7	202	20"	33"	10"	10"	12	14	2.609"	9	24.2
ISC-B-2	8" X 14"	6,000	152.7	4,500	114.5	196	20"	33"	10"	10"	12	14	2.609"	14	26.7
ISC-C-3	12" X 14"	8,500	216.3	6,500	165.4	194	22"	36"	10"	10"	12	14	2.609"	14	42.0
ISC-D-4	12" X 18"	11,500	292.7	9,000	229.0	192	26"	40"	10"	10"	12	14	2.609"	19	45.7
ISC-E-5	16" X 20"	16,500	420.0	12,000	305.4	198	26"	42"	3/16"	3/16"	10	14	6"	8	86.8
ISC-F-6	20" X 20"	20,500	521.8	17,000	432.7	197	26"	42"	3/16"	3/16"	10	14	6"	8	99.3
ISC-G-7	24" X 26"	27,000	687.2	24,000	610.9	193	34"	53"	3/16"	3/16"	7	12	8"	8	120.1
ISC-H-8	30" X 26"	40,000	1018.1	30,000	763.6	196	34"	53"	3/16"	3/16"	7	12	8"	8	147.6

MODEL	A	B	C	D	E	F	G	H	I	J	K	L	M	N	O	P	Q	R	S	T	U	V
A0	12-1/4	20	5-3/4	3-11/16	11	7/8	14	9-7/8	1-15/16	9	1 1/2	12 1/2	3	21 1/2	4	-	-	28	8-3/16	16-3/8	11-1/4	8 1/2
A1	15-3/4	20	5-3/4	5-1/4	11	7/8	14	9-7/8	1-15/16	9	1 1/2	12 1/2	3	21 1/2	4	33	7	26	8-3/16	16-3/8	12-1/8	12
B2	19-3/4	20	7-3/4	7-3/8	11	1-1/8	14	10-1/8	2-7/16	11	1 1/2	12 1/2	3	21 1/2	4	33	7	26	8-3/16	16-3/8	12-1/8	16
C3	19-3/4	22	8	7-1/4	15	1-1/8	18	12-1/8	2-7/16	11	1 1/2	16 1/2	3	23 1/2	4	36	7	29	12-3/16	20-3/8	16-1/8	16
D4	23-1/2	26	10	9-1/4	15	1-3/4	18	13-3/4	2-11/16	12	1 1/2	20 1/2	4	27 1/2	5	40	7	33	12-3/16	20-3/8	15-3/8	20
E5	26-1/2	26	10	10	20	3-1/2	24	18-1/2	3-15/16	15	2	22	4	28	5	42	7	35	16-1/4	25-3/8	21-1/8	22 1/2
F6	26-1/2	26	10	10	24	3-1/2	28	18-1/2	3-15/16	15	2	26	4	28	5	42	7	35	20-1/4	29-3/8	25-1/8	22 1/2
G7	32	34	13	13-1/8	28	4-3/4	32	21-1/2	4-15/16	17	2	30	5	36	6	53	7	46	24-3/8	34-1/2	29-1/4	28 1/2
H8	32	34	13	13-1/8	34	4-3/4	38	21-1/2	4-15/16	17	2	36	6	36	6	53	7	46	30-3/8	40-1/2	35-1/4	28 1/2



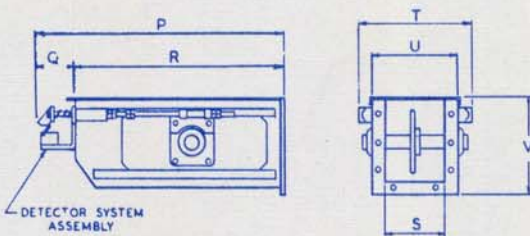
OPTIONAL INTER-MEDIATE DISCHARGE

MODEL NO.	HEIGHT FROM BOTTOM OF TROUGH TO DISCHARGE	SQUARE DISCHARGE SIZE
ISC-0	11"	12-1/4" SQ.
ISC-A-1	11"	12-1/4" SQ.
ISC-B-2	15 1/2"	12-1/4" SQ.
ISC-C-3	11"	16-3/8" X 12
ISC-D-4	15-1/2"	16-3/8" X 12
ISC-E-5	15-1/2"	21" X 12-1/4
ISC-F-6	15-1/2"	25" X 12-1/4
ISC-G-7	18-3/4"	29" X 16-3/8
ISC-H-8	18-3/4"	35" X 16-3/8



STANDARD HEAD SECTION

NOTE: STANDARD LENGTH OF TROUGH SECTION IS 10'-0" OR 5'-0" FACE TO FACE OF FLANGE.



STANDARD TAIL SECTION

