

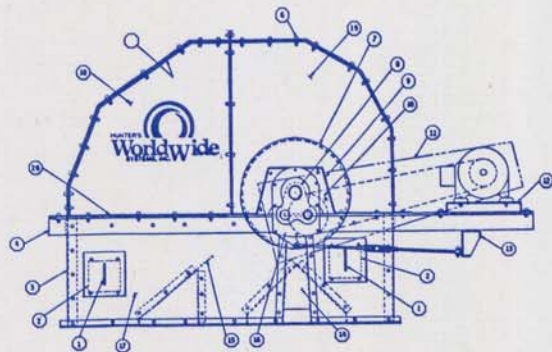
HUNTER'S WORLDWIDE

HEAVY DUTY **STAR SERIES** BUCKET ELEVATOR
 3,000 BU/HR TO 35,000 BU/HR
 76.2MT/HR TO 890.9 MT/HR
 ALL CAPACITIES ARE BASED ON 75% BUCKET FILL

Hunter's Worldwide are doing things today that others will be doing tomorrow.



WSI FEED MILL
 CALDWELL, ID

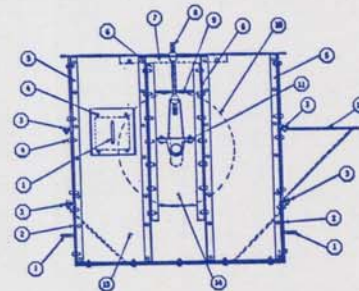


1. HANDLES
2. 4 INSPECTION DOORS - 2 ON EACH SIDE
3. 10 GAGE REPLACEABLE FRONT WEAR PLATE
4. HEAVY DUTY BEARING SUPPORT ANGLE
5. 10 GAGE AR STEEL REPLACEABLE WEARLINER
6. ALL BOLTS GRADE 8
7. HEAD PULLEY VULCANIZED RUBBER LAGGING - ELECTROSTATICALLY BALANCED
8. COMMERCIAL GRADE PILLOW BLOCK BEARINGS LOCATED IN PLACE AND PINNED
9. WEATHER SHIELD AND DUST SHIELD FOR BEARING
10. RUBBER SEAL AROUND BEARING TO ELIMINATE DUST
11. OPTIONAL DRIVE GUARD
12. HEAVY DUTY MOTOR MOUNT TO ACCOMMODATE ALL SIZE MOTORS
13. TESTED HIGH STRENGTH TORQUE ARM BRACKET
14. BEARING SUPPORT COLUMN LOCATED FOR ACCURACY FOR BEARING ALIGNMENT - 3/16 STEEL
15. RUBBER ADJUSTABLE THROAT PLATE FOR ACCURATE CLEANOUT
16. DODGE REDUCER MOUNTED AND ADJUSTED AT FACTORY
17. LOWER HEAD SECTION CONSTRUCTED OF 10 GAGE STEEL
18. UPPER HEAD SECTION CONSTRUCTED OF 10 GAGE STEEL

Be prepared to be impressed with our **STAR SERIES** BUCKET ELEVATOR. The **STAR SERIES** has been designed for you with all of the features you have requested over the years. We have identified **18** features in the head section and **14** in the boot section that are unique to the Hunter Line. Our inspection section has a built in **lock and key** that complies with OSHA regulations.

The **STAR SERIES** reaches into the Twenty-First Century with the proven and tested low profile close center bucket concept. This concept will deliver 45% less damage to your grain.

We have standardized on a **new method of coating**, using two coats of epoxy ester primer and a finish coat of urethane epoxy coating **INSIDE AND OUTSIDE**. Our feature color is blue, other colors are available. We comply with OSHA requirements by coating the ladder, cage, and platform OSHA yellow.



1. HANDLES
2. UNIQUE DESIGN CLEANOUT DOOR
3. FLANGED END PLATES, BOLTED FOR ADDITIONAL STRENGTH
4. 2 INSPECTION DOORS - ONE ON EACH SIDE
5. 4 RIGID CORNER POSTS FOR ADDITIONAL STRENGTH
6. ADJUSTABLE SLIDE RAILS TO PREVENT DUST LEAKAGE
7. SUPPORT COLUMN FOR ADDITIONAL STRENGTH
8. ADJUSTABLE HEAVY DUTY TAKEUP ROD
9. UHMW DUST SEAL BEHIND SLIDE TO PREVENT SEIZING
10. BOOT PULLEY ELECTROSTATICALLY BALANCED
11. PILLOW BLOCK BEARINGS LOCATED 1 1/2" FROM SLIDE TO MEET OSHA REQUIREMENTS
12. BOOT HOPPER CONSTRUCTED OF 3/16 AR STEEL FLANGED AND DESIGNED FOR THE WIDTH OF THE BUCKET FOR ACCURATE FILLING
13. BOOT CONSTRUCTED OF 3/16 STEEL THROUGHOUT
14. COMMERCIALY DESIGNED 1/4" STEEL SLIDE TAKEUP ASSEMBLY TO ACCOMMODATE ACCURATE ADJUSTMENT



1-70 Hunter Access Road • #1 Hunter Industrial Park • Fulton, MO 65251-9601
 Phone - (314) 642-1800 • FAX (314) 642-0900

HUNTER'S WORLDWIDE

HEAVY DUTY STAR SERIES BUCKET ELEVATOR 3,000 BU/HR TO 35,000 BU/HR 76.2MT/HR TO 890.9 MT/HR

ALL CAPACITIES ARE BASED ON 75% BUCKET FILL

Hunter's Worldwide are doing things today that others will be doing tomorrow.

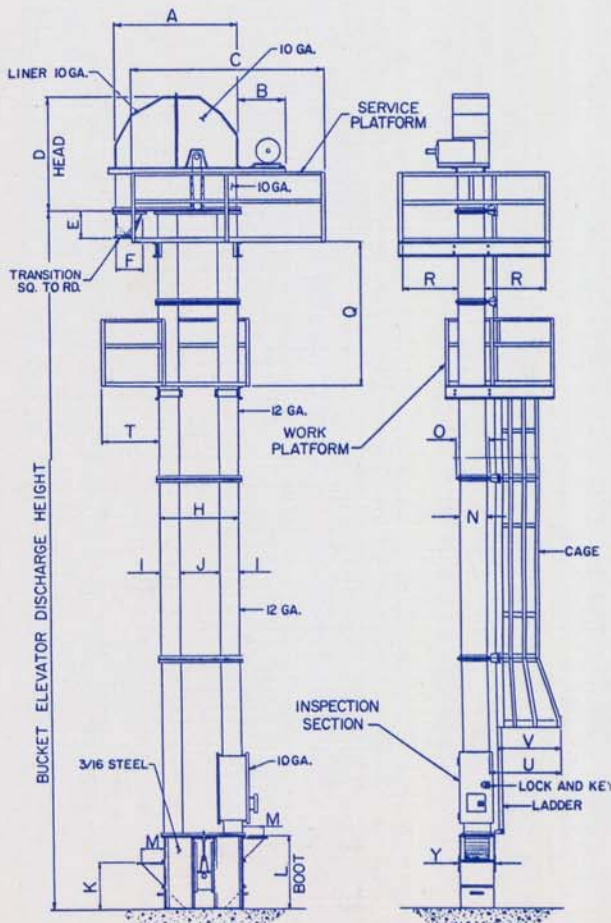
SPECIFICATIONS

Model No.	B.P.H.	Metric Tons Per Hr.	Cu. Ft. Per Hr.	Bucket Size Plastic	Bucket Centers	Head Shaft RPM Speed	Belt Speed	Head Gage	Replacement Wearliner	Head & Boot Pulley Dia.	Legging Gage	Boot Gage
STAR 243	3,000	76.2	3,750	9 x 6	8"	75	471	10GA	10GA-AR	24"	12GA	3/16"
STAR 244	4,000	101.2	5,000	11 x 6	8"	78	490	10GA	10GA-AR	24"	12GA	3/16"
STAR 245	5,000	127.0	6,250	11 x 6	6 1/4"	76	479	10GA	10GA-AR	24"	12GA	3/16"
STAR 246	6,000	152.4	7,500	12 x 6	6 1/4"	77	482	10GA	10GA-AR	24"	12GA	3/16"
STAR 308	8,000	203.2	10,000	14 x 7	9"	79	620	10GA	10GA-AR	30"	12GA	3/16"
STAR 309	9,000	228.6	11,000	14 x 7	8"	79	620	10GA	10GA-AR	30"	12GA	3/16"
STAR 3010	10,000	254.1	12,500	14 x 7	7 1/4"	79	620	10GA	10GA-AR	30"	12GA	3/16"
STAR 3012	12,000	304.9	15,000	15 x 7	7 1/4"	90	707	10GA	10GA-AR	30"	12GA	3/16"
STAR 3613	13,000	330.9	16,250	16 x 8	9 1/4"	80	754	10GA	10GA-AR	36"	12GA	3/16"
STAR 3614	14,000	356.3	17,500	16 x 8	9"	80	754	10GA	10GA-AR	36"	12GA	3/16"
STAR 3615	15,000	381.8	18,750	16 x 8	8 3/4"	80	754	10GA	10GA-AR	36"	12GA	3/16"
STAR 3618	18,000	458.2	22,500	16 x 8	8 3/4"	83	779	10GA	10GA-AR	36"	12GA	3/16"
STAR 4225	25,000	636.3	31,250	Dual 16 x 8	10"	70	769	3/16 & 1/4	1/4 UHMW	42"	10GA	1/4"
STAR 4232	32,000	814.5	40,000	Dual 18 x 8	8 1/2"	69	758	3/16 & 1/4	1/4 UHMW	42"	10GA	1/4"
STAR 4235	35,000	890.9	43,750	Dual 18 x 8	8 1/2"	71	777	3/16 & 1/4	1/4 UHMW	42"	10GA	1/4"

DIMENSIONS

SERIES	STAR 24	STAR 30	STAR 36	STAR 42
A	71 1/2"	81 1/2"	101 1/2"	113"
B	32"	34"	35"	24"
C	116"	128 1/2"	144"	148 1/2"
D	61 1/2"	76"	92"	107"
E	15"	18"	20"	24"
F	15" SQ	18" SQ	20" SQ	13 1/2 x 40"
G	28 1/2"	28"	40"	46"
H	43 1/4"	53 1/4"	61"	67"
I	10 1/4"	12 1/4"	13 1/2"	13 1/2"
J	21 1/4"	27 1/4"	34"	40"
K	28 1/4"	31 1/4"	38 1/2"	43"
L	44 1/4"	48"	60"	66"
M	16"	17"	20"	23"
N	15"	18 1/4"	20"	40"
O	18"	21 1/4"	24"	44"
Q	90"	90"	90"	90"
R	40"	40 1/4"	40 1/2"	39"
T	38"	38"	50"	56"
U	42 1/2"	42 1/2"	42 1/2"	42 1/2"
V	32 1/2"	32 1/2"	32 1/2"	32 1/2"
Y	19"	22"	25"	45"

DIMENSIONS, SPECIFICATIONS & DESIGN SUBJECT TO CHANGE WITHOUT NOTICE.



1-70 Hunter Access Road • #1 Hunter Industrial Park • Fulton, MO 65251-9601
Phone - (314) 642-1800 • FAX (314) 642-0900